

ORPHEUS PROJECT
PRESENTS

ACOUSTIC TURBULENCE



*A JOURNEY
OF
THE SOUL*

WWW.ORPHEUSPROJECT.ORG

PHOTO BY NICOLE STEGER

DIRECTED & CHOREOGRAPHED BY HALI DURAN
MUSIC BY ELENA LEVI, SPENCER EDGERS, &
TODD HUNT

FEBRUARY 21 & 22, 2026
THUNDER MOUNTAIN
AUDITORIUM

WORDS BY DITA DEVI

LIGHTING DESIGN BY MIKE INWOOD

PROJECTION DESIGN BY GREG MITCHELL



from the Dance Director



The concept of the show started when a friend told me about her experience as an apiary her passion for bees set a little tingle off and I knew I should pull a little more on that thread. As I migrated from the honey bee to the bumblebee I became obsessed. This sweet gentle, giant soul, selflessly providing for all viable life forms. There she is. Once I read that in ancient Egyptian mythology the bee represented the journey of the soul, that tingle was boiling and I was off. I think my soul wanted something to guide it. She is a wonderful guide.

She's taken me through many reflections. She helped my grieving, pain, suffering and also helped me recognized my own resilience and made me feel so much gratitude. My grandmother is on her last chapter in life, as I was writing and creating the concept, I was thinking of her journey in this world.

As far as the movement goes, I used my own personal images as inspiration. A lot of the movements are actually inspired by two souls that I've witnessed my entire life and my greatest loves, my parents. My father has significant disabilities from his exposure to agent orange during Vietnam. I've always been in awe of his resiliency and grit understanding the amount of his pain and suffering he lives his life through. He's had daily, debilitating pain my entire life and yet he's one of the hardest and most ambitious workers I know. I've seen his strong spirit fight as he uses his body that only harms him. Just before rehearsals started I had to go to Colorado to take care of him during one of the more painful times of his life. I came directly into the studio ready to create with him and my mom, his caregiver at the very forefront of my mind.

My dad inspired all of my worker bee section. He was a golden gloves boxer and a state champion wrestler when he was younger and in the Navy, he worked in fields harvesting with his family from his first steps. I incorporated movements that speak to his power as well as his trauma.

My mother, as any caregiver can relate, has had her life completely impacted and changed and yet she is a pillar of strength and provides our family with such nourishment. She inspired the maternal nature of my bee, there's even a recreation of a picture of my mother and I laying on the grass, me piled in top of her.

They both were just where my heart was when I was working and reflecting. It's what my body wanted to reflect on.

I learned very valuable lessons from this production. Most importantly for me, as someone who struggles with depression, the importance of completing my life cycle. The fruits that can come from my labor that may benefit all. -- Hali Duran

from the Artistic Director



Welcome to Orpheus Project's production of *Acoustic Turbulence*! This production is characteristic of Orpheus Project's commitment to keep growing and evolving the experiences that we create for our audiences. We're bringing a lot of creativity and innovation into this show, and we're excited to share it with you.

This past year we were fortunate enough to hire Hali Duran as our Dance Director. Hali has previously worked with Orpheus on many occasions. You may recall her fantastic contribution as choreographer of our very popular *West Side Story* production in 2017. *Acoustic Turbulence* is Hali's first project as Dance Director, a position that she has built from the ground up. Orpheus Project looks forward to more dance collaborations with musicians and designers in the near future, as we explore this new chapter.

We are committed to creating and performing new music, and this production showcases that commitment because it consists of entirely new music composed by three Juneau composers. This production is also the first of ours to incorporate electronic music!

You'll notice even more innovation with the larger role that poetry has in this production. We have incorporated spoken word in the past, and most recently in our *Conflict and Compassion* production from 2024, but *Acoustic Turbulence* features powerful new poetry written by Dita Devi that you'll hear spoken and sung.

In addition to the dancing and music, *Acoustic Turbulence* is a visually stunning show, featuring the flying structures that we call the "Nogouchis", brought to life with masterful lighting and projections. We are thrilled to bring together so many different art forms to create this vibrant and complex piece that will leave you immersed in the beauty of artistic expression and transport you... beyond.

Orpheus Project has been around since 1996 (as Opera to Go) and has gone through many changes over the years. We are very happy to be in a position to fill in many gaps in the Juneau arts scene. Our focus on new music, early music, production creation, and now officially dance, puts us in a very unique position among arts groups. Sometimes it can be hard to pin Orpheus down with a simple description, and I think that makes us all the more valuable.

Looking ahead in the seasons to come, we will present more early music, new music, and dance, and we have TWO new opera projects in the works based on local history, which we consider one of the most important niches that we fill.

Enjoy the show!

William Todd Hunt, Artistic Director

Synopsis from the composers

Prologue - We start off in the black void of the cosmos. The only sound we hear is the hum of energy waiting to be released. A Queen Bee has died. Her soul ascends to Ra. We now hear the crackling energy of the spiritual realm. She tells Ra what she has learned on Earth. He weeps, and his teardrops fall on a bumblebee egg and gives it life.

Scene 1 - Ra continues to weep and four more eggs are filled with life force. All five larvae eat their way out of the wax pots they hatched into. Time passes, and their wings begin to grow. Then they take flight!

Scene 2 - Love and intimacy are some of the hardest truths of life to put into words. Here, we are inspired and invited into tenderness and carnal desire by Kamadeva, the Hindu god of love.

Scene 3 -Following the death of her lover, the Queen enters the five stages of grief. Denial opens with a solitary cello, its whole-tone melody hollow and untethered; rising and falling in ragged repetition, it mirrors the breathlessness of loss. With each stage that follows, a new voice enters, tracing her gradual journey inward. In Anger, two additional voices emerge as the saxophones buzz with furious energy and the cello drives a stomping figure that splinters into frenzied, jeering fragments before the momentum dissipates, leaving behind a quieter, more deeply rooted rage. The violin enters in Bargaining, and turns toward obsession and fixation, where a single rhythm repeats relentlessly, conveying desperation and an unwillingness to let go. The urgency of the rhythm intensifies as the stage unfolds. This gives way to the flute and horn's entrance in Depression. The musicians improvise a suspended texture, the harmonies hovering and settling into vertical space rather than moving forward, as time itself seems to pause. Finally, the drumset enters, ushering in Acceptance. The ensemble unifies in a powerful rock ballad and the fractured elements gradually cohere, allowing the Queen to move forward once again.

Scene 4 - The Queen's inner voice gradually takes on an ethereal form as she assumes her role as Mother. The sounds of the natural world begin to recede, their presence softening as her intuition grows clearer and more defined. What was once

internal and unspoken slowly emerges into the open, no longer a private thought but a guiding presence. This transformation blossoms into a sung trio: warm, intimate, and protective, like a mother's lullaby. In this moment, she passes her wisdom and strength to her daughters, who take up the mantle and responsibility of continuing her lineage.

Scene 5 - So many destructive forces work against a colony. This scene first depicts the colony in its content state - everything is running smoothly. Then, five different disturbances plague the colony - from habitat reduction to disease and death. Each disturbance is followed by an ever briefer period of ease when things function normally. The scene ends with the queen wondering what the point of all this is.

Scene 6 and Epilogue - In this scene, the Queen has a vision of creation, a cosmic soup divined through the ether, before fulfilling her cycle of life.

Thank you to
Forbidden Peak Brewery and Red Spruce Eatery
for being sponsors for this production!



The Show Begins with You!

You are welcome to help us start tonight's show by creating some acoustic turbulence of your own. At the beginning, the poet will ask you to add your hum to our collective hive sound, to prepare this space for our production. You can fade out as the poet takes over.

Bhramari Pranayama, or "Bee's Breath,"

In the rich tradition of yogic breathing practices, Bhramari Pranayama, or "Bee's Breath," involves making a low-pitched humming sound, similar to a buzzing bee, while exhaling with closed ears, eyes, and mouth. Modern research describes this practice as a "sonic cleanser" of our sinus cavities and "stress buster" for our nervous systems.

Abishek K, Bakshi SS, Bhavanani AB. The Efficacy of Yogic Breathing Exercise Bhramari Pranayama in Relieving Symptoms of Chronic Rhinosinusitis. *Int J Yoga*. 2019 May-Aug;12(2):120-123. doi: 10.4103/ijoy.IJOY_32_18. PMID: 31143019; PMCID: PMC6521749.

Trivedi G, Sharma K, Saboo B, Kathirvel S, Konat A, Zapadia V, Prajapati PJ, Benani U, Patel K, Shah S. Humming (Simple Bhramari Pranayama) as a Stress Buster: A Holter-Based Study to Analyze Heart Rate Variability (HRV) Parameters During Bhramari, Physical Activity, Emotional Stress, and Sleep. *Cureus*. 2023 Apr 13;15(4):e37527. doi: 10.7759/cureus.37527. PMID: 37193427; PMCID: PMC10182780.



Juneau Music Therapy LLC

Christine Wick, MM, MT-BC

Where music becomes a pathway for growth.

Music Therapy for children, teens, and adults in the Juneau community. Specializing in neurodivergent support, including autism and ADHD, and family-centered care through rhythm and creative expression to strengthen regulation, communication, and connection.

🌐 www.juneaumusictherapy.com ✉ christine@juneaumusictherapy.com

📷 [@juneaumusictherapy](https://www.instagram.com/juneaumusictherapy)

Upcoming arts events in Juneau

Con Brio Chamber Series - February 27 2pm, Jeff Karlson and Sue Kazama. Alaska State Museum.

Juneau String Ensembles - February 28 7pm, TMMS. Chamber Music Night

Perseverance Theatre - Pueblo Revolt. Feb 27-March 15

Taku Winds - featuring Kyle Farley-Robinson March 7, 7pm TMMS

Juneau Piano Series - Barbara Mirano March 8 3pm JACC

Con Brio Chamber Series - Sara Radke Brown and Candice LiVolsi. March 13th Chapel by the Lake and March 14th at the Alaska State Museum

Juneau Piano Series - Andrew Brownell March 15 3pm JACC

Acoustic Turbulence

a journey of the Soul

Hali Duran, Production Concept and Choreographer
Elena Levi, Todd Hunt, and Spencer Edgers, Composers
Dita Devi, Poet

Life Cycle of the Queen Bumblebee

Prologue - Cosmos

Ra receives a dead queen's soul and weeps a new queen bee onto earth

Scene 1 - Metamorphosis

The new queen downloads information from Ra. Ra weeps other queens to the earth. They eat their way out of their wax pots. The souls discovery of their body and the new world.

Scene 2 - Mating

Kamadeva Pas de Deux. She smells the drones scent and is hit with the arrows of Kamadeva. She mates with her drone. The drone dies.

Scene 3 - Diapause

Suffering the loss of her mate, she experiences the 5 stages of grief. Denial, anger, bargaining. She enters hibernation in depression. Her hibernation signifies the passage of time as a healing mechanism. She emerges from hibernation in acceptance.

Scene 4 - Solitary

She discovers her intuition. She is self reliant, resourceful and productive. She builds. She founds a colony.

Scene 5 - Eusocial

The rise of the workers. They are faced with the greatest risks to bumblebee survival. Habitat loss, pesticide use, climate change, diseases and parasites. They are resilient. They are fighters.

Scene 6 - Gyne

In a vision provided by a divine presence, she sees the creation of heavens and earth, the life giving rain that revives the land, the provision of livestock for food and clothing and transport, the creation of mountains, rivers and roads, the stars that guide travelers, the miracle of milk and honey, and then the bee, which provides for all mankind. From this place she decides, by her choice, to produce the next gyne - the next queen.

Epilogue - Death

Once she has laid her eggs. She takes her last flight. Her wings are worn and damaged. Her body is tired. Her soul is ready. She kisses the ground...

Performers

Dancers

The Queen, Anouk Otsea	Shannon Mason
The Drone, Joshua Midgett	Sydney Truitt
Hali Duran	Alex Vrabec
Alisha Falberg	J. Skiba Wuoti

Musicians

Tess Altiveros	Soprano
Kristina Paulick	Mezzo Soprano and French Horn
Dita Devi	Poet
Sally Schlichting	Flute
Todd Hunt	Clarinets and Saxophone
Elena Levi	Violin and Viola
Ben Holtz	'Cello
Kristin Mabry	Percussion
Spencer Edgers	Keyboard and Saxophone

Designers

Mike Inwood, Lighting
Greg Mitchell, Projections
Jim Simard, Nogouchi Structures
Katie Raffier, Costumes
Dawn Jouppi, Makeup
Spencer Edgers, Poster

Crew

Chris Schweiger, Stage Manager
Grace Lee, Asst. Stage Manager
Bo Anderson, Auditorium Manager
Run Crew
Jim Simard
Kainoa Thole
Alee Sowell
Clinton Mitchell



The Gym & Mountainside Wellness

Open 24 hours

Best Rates in Town
Sauna
Hammer Strength Equipment
Free Weights
Cardio Equipment
Mountainside Wellness Classes
Circuit Cave

Staff Hours:

Monday – Friday 10am-1pm & 4:30pm - 6:30pm
Weekends 10am-1pm

1248 Glacier Avenue
www.JuneausGym.com
907-364-4625

About the Title

Acoustic Turbulence refers to the chaotic, non-linear interaction between sound waves and turbulent fluid motion. It's where the orderly world of acoustics (clean waves) meets the messy world of fluid dynamics (swirling eddies). When we hear a bee buzz, this is an example of acoustic turbulence. As a bumblebee flaps its wings, it creates a Leading Edge Vortex (LEV). This is a spinning "tube" of low-pressure air on top of the wing. The "roar" or deep hum of a bumblebee is the sound of these vortices breaking away (shedding) from the wing. This creates a turbulent wake that actually provides the extra lift needed to carry their heavy bodies.

from our Poet

Everything from pulling a drowning bee out of the ocean in a beach in Hawaii to the sounds and words of the composers and choreographer of the project and ancient mythology have inspired the contributions to Acoustic Turbulence. Observing nature and noting the parallels of the bumblebee's journey through life in both personal and obscure ways has inspired the words. Collaborating with composers with varied styles has paved the tone that the words take on to visualize them, as I see a painting of words combined with movement and dance.

--Dita Devi

JUNEAU **Arts &
Humanities**
COUNCIL

SEASON 52
Upcoming Events

**3/8 - Juneau Piano Series: Barbara
Mirano**

**3/15 - Juneau Piano Series: Andrew
Brownell**

3/18 - Stress Free Art Night

4/18 - Fresh Air Market



Bios



Hali Duran is a local dancer, choreographer and director. She studied at the International Ballet School, Colorado Conservatory of Dance, and the University of Colorado, Boulder where she also studied environmental design with an emphasis in urban planning. She directed and choreographed Orpheus Project's *La liberazione di Ruggiero dall'isola d'Alcina*. Hali has performed in Perseverance Theatre's *Guys and Dolls* and *Chicago*,

Orpheus Project's *Wolf Song* and *Princes Sophia* as well as choreographed numerous productions in town, including Orpheus Project's *West Side Story*, Theatre in the Rough's *Cabaret*, Juneau Douglas Little Theatre's *Next to Normal*, Perseverance Theatre's *Fun Home*, and Theatre Alaska's *Christmas Carol* and *Midsummer Nights Dream* to name only a few. She loves Juneau and the vibrant performing arts opportunities this community supports.



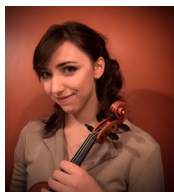
Dita Devi Hughes is a painter and poet from Miami, Florida living in Juneau, Alaska. Her work primarily focuses on education, social justice and environmental justice but has a diverse scope of content. She has performed for several organizations, most notably a solo poetry feature directly to Bernie Sanders live regarding

climate change and gentrification in Miami. Her multimedia work including painting and spoken word installations have been featured in exhibitions such as ArtMiami and in Miami History Museum. Performing spoken word throughout the country including Miami, Atlanta, Chicago, Nashville and New Jersey continues to nurture her appetite to collaborate with other artists and work in various environments. She has also facilitated bringing other spoken word artist to Juneau to share their art from across the country deepening her belief that we can learn and grow from one another through art and finding our commonality within our differences.



Spencer Edgers is a multi-instrumentalist, composer, and producer based on Lingít Aaní. A finalist for the 2024 American Prize in Composition (opera/theater/film/dance), Edgers draws on a fusion of musical styles to create original sonic worlds.

Spencer has debuted two original short operas as part of Seattle Opera's Creation Lab, and with support from the Juneau Community Foundation is currently collaborating with poet Tripp J Crouse to create a feature length opera titled *Black Rock, USA*, scheduled to workshop in fall 2026.



Elena Levi has been studying composition since her partner, Ben, first encouraged her to write duets for the two of them in 2018. Ever since, she has had opportunities to compose for new music groups such as Boston University's Time's Arrow, Mivos Quartet JACK Quartet, and Splintered Reeds.



William Todd Hunt has studied composition for most of his adult life with the great masters of the past 700 years through his work as a conductor. Some of his most influential teachers have been Dmitri Shostakovich, Béla Bartók, and Guillaume de Machaut, despite never having met them. When not composing, Mr. Hunt teaches woodwinds privately and is Artistic Director of the Orpheus Project.

Recent performances include A Wolf Called Romeo with Orpheus Project and Nick Jans, a flute quartet performed by Flutacious: Lost - The Kaua'i 'ō'ō as well as Charon and Kerberos from his Pluto Suite for Saxophone Quartet and String Quartet with the Aurora Saxophone Quartet, and Wounds Heal, a song cycle with dance, performed by Tess Altiveros, Jay Query, and Skiba Wuoti with Orpheus Project.

More bios online!



PERSEVERANCE THEATRE
— Alaskan Regional Theatre —

Anax Yaa Andagan Yé / Douglas

FEB 27 – MAR 15

PUEBLO REVOLT

BY DILLON CHRISTOPHER CHITTO

DIRECTED BY DANIEL LEEMAN SMITH



TICKETS AT
PTALASKA.ORG

Orpheus Donors Season 2025-2026

\$1000+

Juneau Arts and Humanities
Council
Eric Olsen & Vicki Bassett
Harry & Charlotte Hunt
Mary Willson

Terry Cramer
John and Nancy DeCherney
Drew Dembowski
Sharon Gaipman
Jane Ginter & Bob Coghill
Alisha Falberg & Adam Moser
Jim and Katherine Heumann
Emily Kane

\$500-\$999

Anonymous
Janice McPhetres
Julie Neyhart
Judy and Verne Skagerberg
JEMA
Colleen & Steve Torrence

Gladi Kulp & Jon Pond
Roman Motyka
Ceann Murphy
Julie K. North
Tina Pasteris & Art Petersen
Jon and Susan Pollard
Jay Query & Julie DeLong
Sharon Seim

\$250-\$499

Catherine and Bruce Johnson
Rodney and Judy Mitchell
Phil and Janet Schempf
Douglas and Anne
Standerwick
Ben Holtz & Elena Levi
Todd Hunt & Kristin Mabry
Bob and Glenda Hutton
Kristine Benson
Linda and Paul Rosenthal
Amy Pinney
Tom Melville

Michael Stanley & Natalee
Rothaus
John Staub & Stephanie Hoag
Sally Smith
Sally Schlichting & Bob King
Jetta Whittaker and Rob
Steedle
Pam Watts
Catherine Wilkins

Up to \$99

\$100-\$249

Sharon Barton
Mary Borthwick and Robert
Minch

Vicki Adney
Bill Smoker
Odin Brudie & Frankie Pillifant
Peggy Cowan
Mary DeSmet & Greg Burger
Sarah Isto
Linda Kruger and Jeff Gnass

Thank Yous

University of California Santa Barbara
Angel Renninger and the TMMS band
Marjie Hamburger and Peter Otsea
Bo Anderson and Kathleen Harper
David and Kristen Miller
Bob and Chris Urata
Betsy Sims
Thrush Hill Music
Forbidden Peak Brewing
Red Spruce Eatery
The Gym
Perseverance Theatre
Katy Giorgio
Hollie Roselle

Board of Directors and Staff

Elena Levi, President
Christine Wick, Vice President
Spencer Edgers, Treasurer
Emily Kane, Secretary

William Todd Hunt, Artistic Director
Hali Duran, Dance Director

www.OrpheusProject.org



KTOO

**YOUR
PUBLIC
MEDIA**

proud to support

Orpheus Project

news, community, arts, connection

